

# C1b

# WEST VILLAGE

KARRINYUP

## DETAILS

Bedrooms	2
Bathrooms	2
Car Bays	2

## AREAS

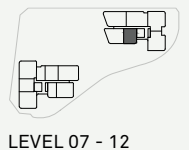
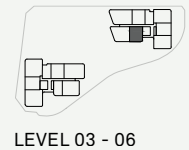
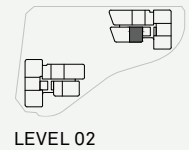
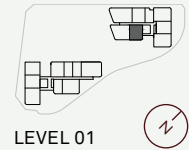
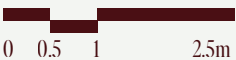
<b>Total</b>	<b>160m<sup>2</sup></b>
Internal Living	99m <sup>2</sup>
Outdoor Living	31m <sup>2</sup>
Car	26m <sup>2</sup>
Store	4m <sup>2</sup>
Residents' Resort	2,500m <sup>2</sup>

## LOCATION

Residence	209*
Similar	309*, 609, 809, 909, 1009,
	1109, 1209

\* 1 Car Bay

Variations from Strata Plan and Architectural Layout Plan may apply. Furniture is indicative. Shape and configuration of terraces, doors, windows, screens and ducts may differ from those illustrated. Areas of Residence given are based on architectural measurements. This varies from strata area as it is a different method of measuring the Residence. Plans not to scale.



# C4

# WEST VILLAGE

KARRINYUP

## DETAILS

Bedrooms	2
Bathrooms	2
Car Bays	1-2

## AREAS

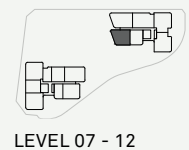
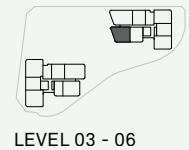
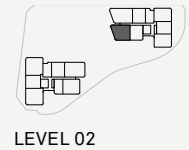
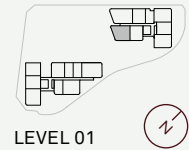
<b>Total</b>	<b>187m<sup>2</sup></b>
Internal Living	114m <sup>2</sup>
Outdoor Living	43m <sup>2</sup>
Car	26m <sup>2</sup>
Store	4m <sup>2</sup>
Residents' Resort	2,500m <sup>2</sup>

## LOCATION

Residence	210
Similar	1210

\* 1 Car Bay

Variations from Strata Plan and Architectural Layout Plan may apply. Furniture is indicative. Shape and configuration of terraces, doors, windows, screens and ducts may differ from those illustrated. Areas of Residence given are based on architectural measurements. This varies from strata area as it is a different method of measuring the Residence. Plans not to scale.



- ★ Fixed Full Height Glazing Panel
- + Fixed Full Height Architectural Perforated Screen
- ▲ Fixed Full Height Architectural Batten Screens



# D1

# WEST VILLAGE

KARRINYUP

## DETAILS

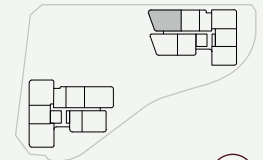
Bedrooms	3
Bathrooms	2
Car Bays	2

## AREAS

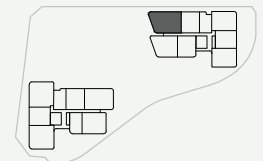
<b>Total</b>	<b>234m<sup>2</sup></b>
Internal Living	143m <sup>2</sup>
Outdoor Living	61m <sup>2</sup>
Car	26m <sup>2</sup>
Store	4m <sup>2</sup>
Residents' Resort	2,500m <sup>2</sup>

## LOCATION

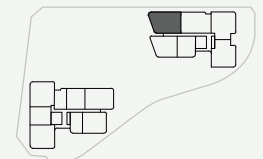
Residence	311
Similar	411, 911



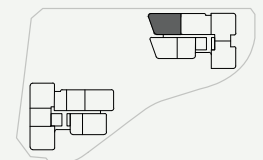
LEVEL 01



LEVEL 02



LEVEL 03 - 06



LEVEL 03 - 06

Variations from Strata Plan and Architectural Layout Plan may apply. Furniture is indicative. Shape and configuration of terraces, doors, windows, screens and ducts may differ from those illustrated. Areas of Residence given are based on architectural measurements. This varies from strata area as it is a different method of measuring the Residence. Plans not to scale.



- ★ Fixed Full Height Glazing Panel
- + Fixed Full Height Architectural Perforated Screen
- ▲ Fixed Full Height Architectural Batten Screens

# D2

# WEST VILLAGE

KARRINYUP

## DETAILS

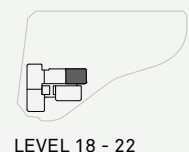
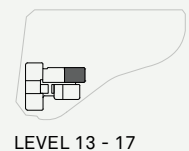
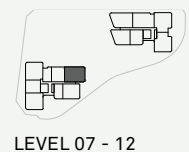
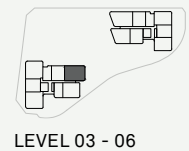
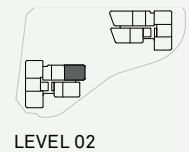
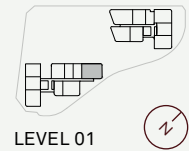
Bedrooms	3
Bathrooms	2
Car Bays	2

## AREAS

<b>Total</b>	<b>222m<sup>2</sup></b>
Internal Living	146m <sup>2</sup>
Outdoor Living	46m <sup>2</sup>
Car	26m <sup>2</sup>
Store	4m <sup>2</sup>
Residents' Resort	2,500m <sup>2</sup>

## LOCATION

Residence	206
Similar	306, 406, 506, 806, 1006, 1106, 1206, 1305, 1405, 1505, 1605, 1705, 1804, 1904, 2004, 2104, 2204



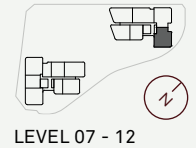
Variations from Strata Plan and Architectural Layout Plan may apply. Furniture is indicative. Shape and configuration of terraces, doors, windows, screens and ducts may differ from those illustrated. Areas of Residence given are based on architectural measurements. This varies from strata area as it is a different method of measuring the Residence. Plans not to scale.



# D5

# WEST VILLAGE

KARRINYUP



## DETAILS

Bedrooms	3
Bathrooms	2.5
Car Bays	2

## AREAS

Total	240m <sup>2</sup>
Internal Living	163m <sup>2</sup>
Outdoor Living	47m <sup>2</sup>
Car	26m <sup>2</sup>
Store	4m <sup>2</sup>
Residents' Resort	2,500m <sup>2</sup>

## LOCATION

Residence	814
Similar	914, 1014, 1114, 1214



\* Full Height Frosted Glazing to Bathroom Window

Variations from Strata Plan and Architectural Layout Plan may apply. Furniture is indicative. Shape and configuration of terraces, doors, windows, screens and ducts may differ from those illustrated. Areas of Residence given are based on architectural measurements. This varies from strata area as it is a different method of measuring the Residence. Plans not to scale.

# D6

# WEST VILLAGE

KARRINYUP

## DETAILS

Bedrooms	3
Bathrooms	2.5
Car Bays	2

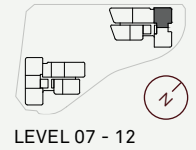
## AREAS

<b>Total</b>	<b>239m<sup>2</sup></b>
Internal Living	162m <sup>2</sup>
Outdoor Living	47m <sup>2</sup>
Car	26m <sup>2</sup>
Store	4m <sup>2</sup>
Residents' Resort	2,500m <sup>2</sup>

## LOCATION

Residence	1013
Similar	1213

Variations from Strata Plan and Architectural Layout Plan may apply. Furniture is indicative. Shape and configuration of terraces, doors, windows, screens and ducts may differ from those illustrated. Areas of Residence given are based on architectural measurements. This varies from strata area as it is a different method of measuring the Residence. Plans not to scale.



\* Full Height Architectural Facade Corner Feature Element on certain levels. Refer to Contract Plans

# D7

# WEST VILLAGE

KARRINYUP

## DETAILS

Bedrooms	3
Bathrooms	2
Car Bays	2

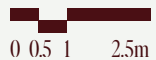
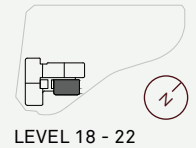
## AREAS

Total	279m <sup>2</sup>
Internal Living	179m <sup>2</sup>
Outdoor Living	70m <sup>2</sup>
Car	26m <sup>2</sup>
Store	4m <sup>2</sup>
Residents' Resort	2,500m <sup>2</sup>

## LOCATION

Residence	2005
Similar	2105, 2205

Variations from Strata Plan and Architectural Layout Plan may apply. Furniture is indicative. Shape and configuration of terraces, doors, windows, screens and ducts may differ from those illustrated. Areas of Residence given are based on architectural measurements. This varies from strata area as it is a different method of measuring the Residence. Plans not to scale.



# D8

# WEST VILLAGE

KARRINYUP

## DETAILS

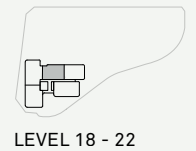
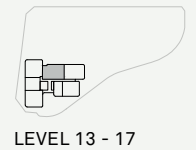
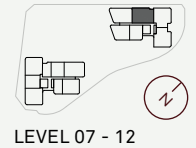
Bedrooms	3
Bathrooms	2.5
Car Bays	2

## AREAS

<b>Total</b>	<b>239m<sup>2</sup></b>
Internal Living	180m <sup>2</sup>
Outdoor Living	29m <sup>2</sup>
Car	26m <sup>2</sup>
Store	4m <sup>2</sup>
Residents' Resort	2,500m <sup>2</sup>

## LOCATION

Residence	712
Similar	1012, 1212



Variations from Strata Plan and Architectural Layout Plan may apply. Furniture is indicative. Shape and configuration of terraces, doors, windows, screens and ducts may differ from those illustrated. Areas of Residence given are based on architectural measurements. This varies from strata area as it is a different method of measuring the Residence. Plans not to scale.







# WEST VILLAGE

KARRINYUP

## DETAILS

Bedrooms	3
Bathrooms	2.5
Car Bays	2

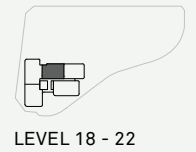
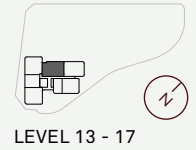
## AREAS

Total	234m <sup>2</sup>
Internal Living	180m <sup>2</sup>
Outdoor Living	33m <sup>2</sup>
Car	26m <sup>2</sup>
Store	4m <sup>2</sup>
Residents' Resort	2,500m <sup>2</sup>

## LOCATION

Residence	1404
Similar	1504, 1604, 1704, 1803, 1903, 2003, 2103, 2203

Variations from Strata Plan and Architectural Layout Plan may apply. Furniture is indicative. Shape and configuration of terraces, doors, windows, screens and ducts may differ from those illustrated. Areas of Residence given are based on architectural measurements. This varies from strata area as it is a different method of measuring the Residence. Plans not to scale.



# P1

## DETAILS

Bedrooms	3-4
Bathrooms	2
Car Bays	2-3

## AREAS

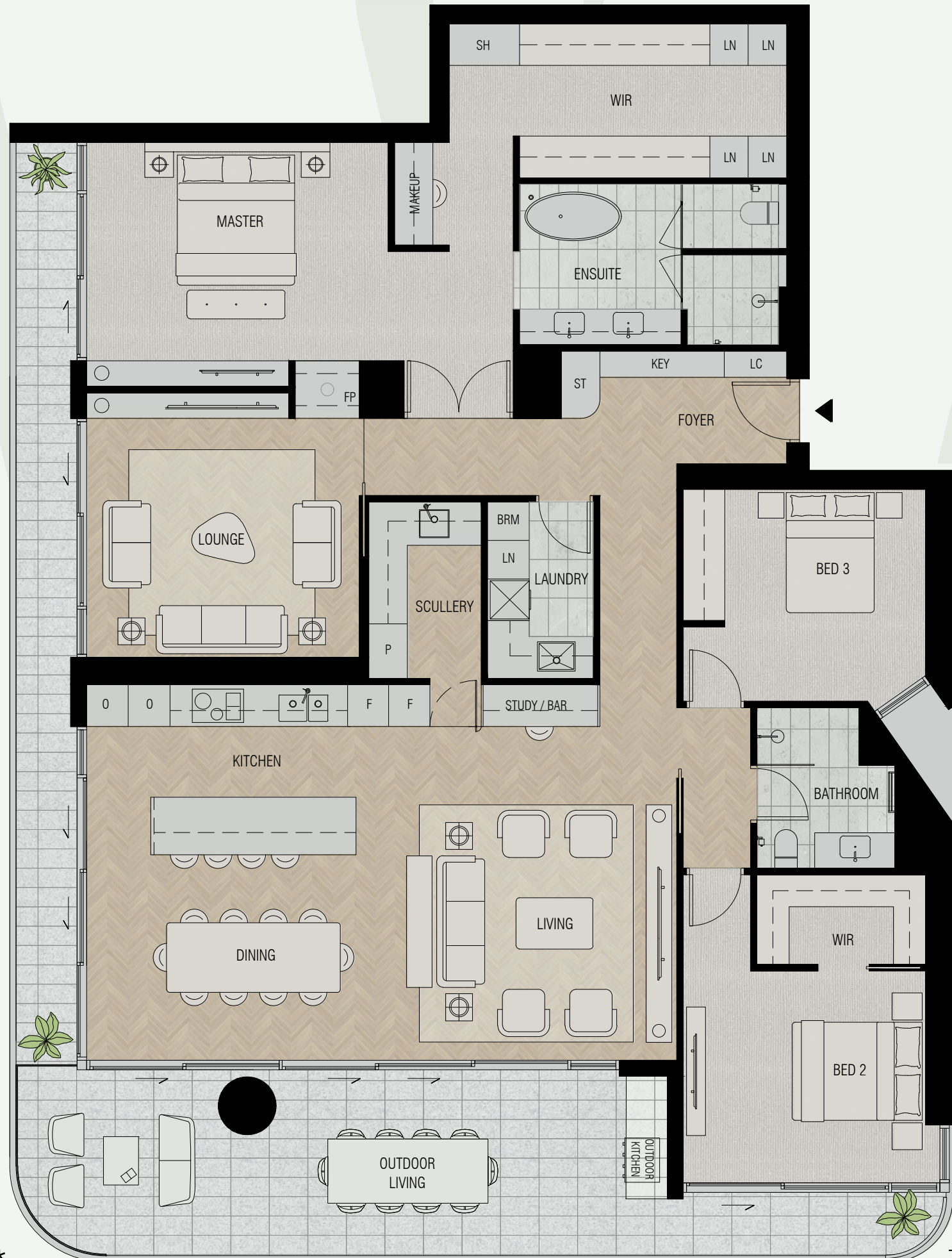
<b>Total</b>	<b>279m<sup>2</sup></b>
Internal Living	203m <sup>2</sup>
Outdoor Living	46m <sup>2</sup>
Car	26m <sup>2</sup>
Store	4m <sup>2</sup>
Residents' Resort	2,500m <sup>2</sup>

## LOCATION

Residence	1801
Similar	1901, 2001, 2101

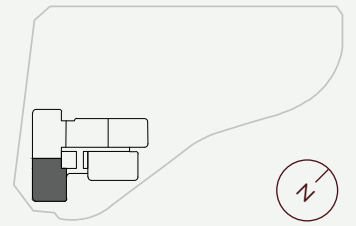
\* 3 Car Bays

Variations from Strata Plan and Architectural Layout Plan may apply. Furniture is indicative. Shape and configuration of terraces, doors, windows, screens and ducts may differ from those illustrated. Areas of Residence given are based on architectural measurements. This varies from strata area as it is a different method of measuring the Residence. Plans not to scale.



# WEST VILLAGE

KARRINYUP

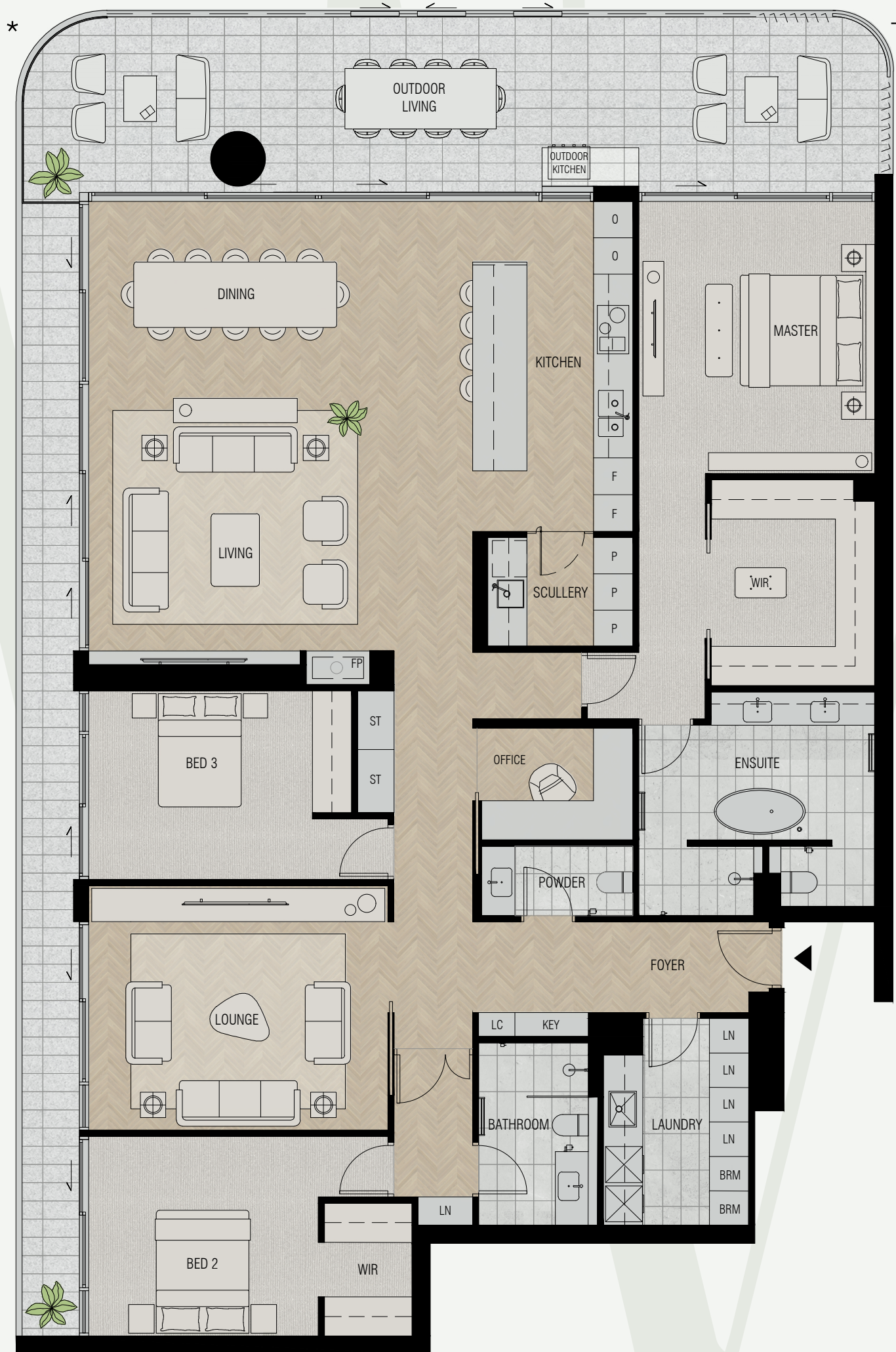


LEVELS 18 - 22

- \* Fixed Full Height Glazing Panel
- + Fixed Full Height Architectural Perforated Screen

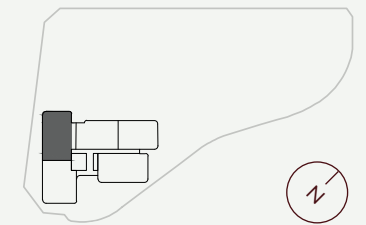


# P2



# WEST VILLAGE

KARRINYUP



LEVELS 18 - 22

## DETAILS

Bedrooms	3-4
Bathrooms	2.5
Car Bays	2-3

## AREAS

<b>Total</b>	<b>317m<sup>2</sup></b>
Internal Living	229m <sup>2</sup>
Outdoor Living	58m <sup>2</sup>
Car	26m <sup>2</sup>
Store	4m <sup>2</sup>
Residents' Resort	2,500m <sup>2</sup>

## LOCATION

Residence	2102
Similar	2202*

\* 3 Car Bays

Variations from Strata Plan and Architectural Layout Plan may apply. Furniture is indicative. Shape and configuration of terraces, doors, windows, screens and ducts may differ from those illustrated. Areas of Residence given are based on architectural measurements. This varies from strata area as it is a different method of measuring the Residence. Plans not to scale.



- ★ Fixed Full Height Glazing Panel
- + Fixed Full Height Architectural Louvres & Perforated Screen



# P2

## DETAILS

Bedrooms	3-4
Bathrooms	2.5
Car Bays	2-3

## AREAS

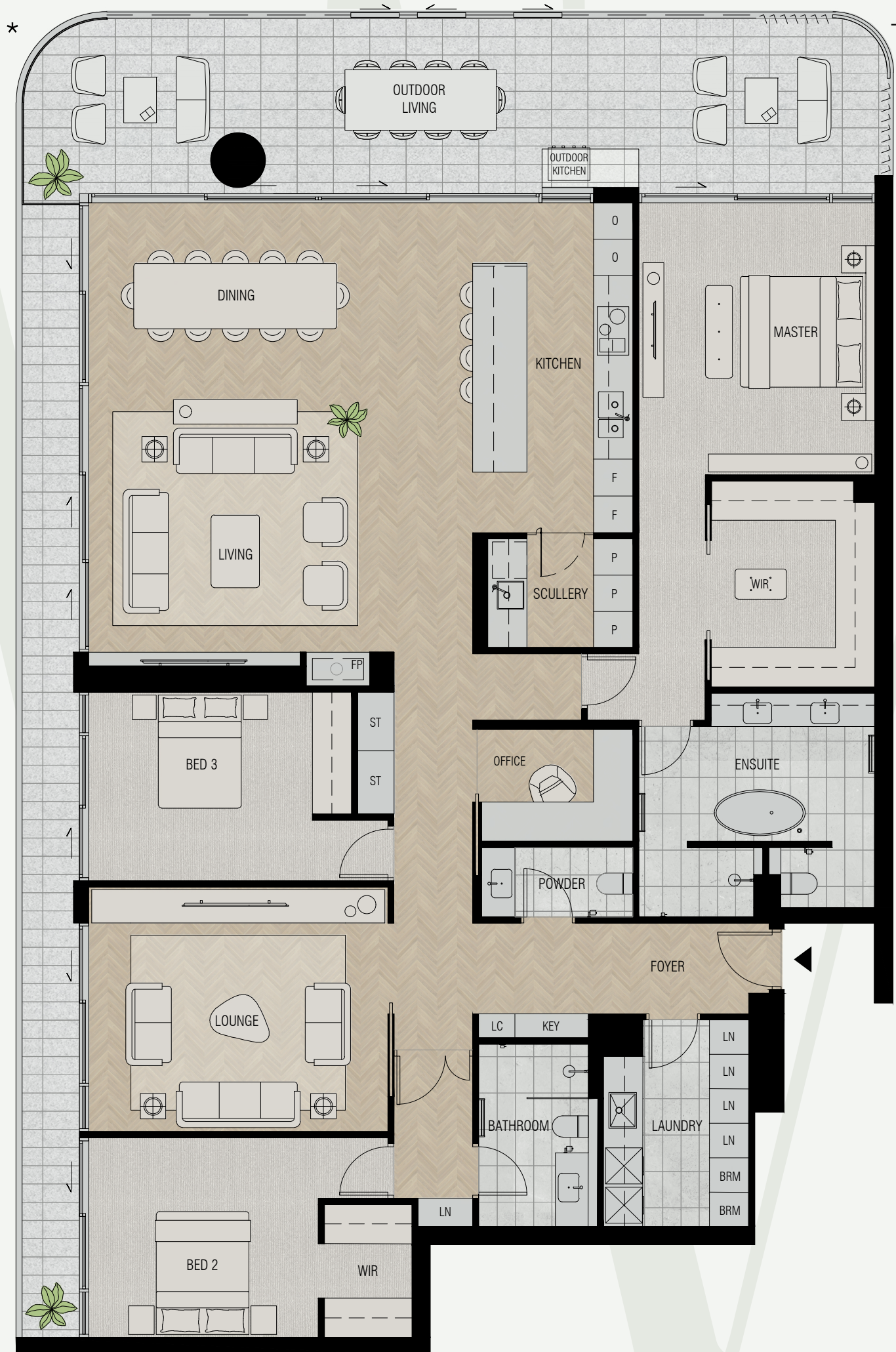
<b>Total</b>	<b>317m<sup>2</sup></b>
Internal Living	229m <sup>2</sup>
Outdoor Living	58m <sup>2</sup>
Car	26m <sup>2</sup>
Store	4m <sup>2</sup>
Residents' Resort	2,500m <sup>2</sup>

## LOCATION

Residence	2102
Similar	2202*

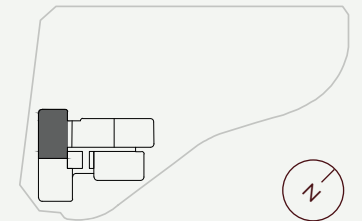
\* 3 Car Bays

Variations from Strata Plan and Architectural Layout Plan may apply. Furniture is indicative. Shape and configuration of terraces, doors, windows, screens and ducts may differ from those illustrated. Areas of Residence given are based on architectural measurements. This varies from strata area as it is a different method of measuring the Residence. Plans not to scale.



# WEST VILLAGE

KARRINYUP



LEVELS 18 - 22

- ★ Fixed Full Height Glazing Panel
- + Fixed Full Height Architectural Louvres & Perforated Screen