

# C1b

# WEST VILLAGE

## Details

Bedrooms	2
Bathrooms	2
Car Bays	2

## Areas

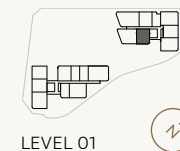
Total	160m <sup>2</sup>
Internal Living	99m <sup>2</sup>
Outdoor Living	31m <sup>2</sup>
Car	26m <sup>2</sup>
Store	4m <sup>2</sup>
Residents' Resort	2,750m <sup>2</sup>

## Location

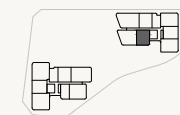
Residence	110*
Similar	209*, 309*, 409, 509, 609, 709 809, 909, 1009, 1109, 1209

\* 1 Car Bay

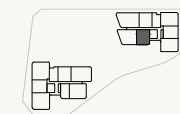
Variations from Strata Plan and Architectural Layout Plan may apply. Furniture is indicative. Shape and configuration of terraces, doors, windows, screens and ducts may differ from those illustrated. Areas of Residence given are based on architectural measurements. This varies from strata area as it is a different method of measuring the Residence. Plans not to scale.



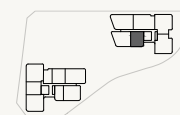
LEVEL 01



LEVEL 02



LEVEL 03 - 06



LEVEL 07 - 12



# WEST VILLAGE

# C4

## Details

Bedrooms	2
Bathrooms	2
Car Bays	1 - 2

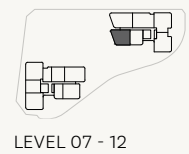
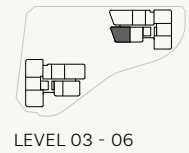
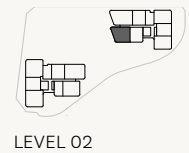
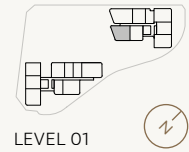
## Areas

Total	187m <sup>2</sup>
Internal Living	114m <sup>2</sup>
Outdoor Living	43m <sup>2</sup>
Car	26m <sup>2</sup>
Store	4m <sup>2</sup>
Residents' Resort	2,750m <sup>2</sup>

## Location

Residence	210
Similar	310*, 410, 510, 610, 710
* 1 Car Bay	810, 910, 1010, 1110, 1210

Variations from Strata Plan and Architectural Layout Plan may apply. Furniture is indicative. Shape and configuration of terraces, doors, windows, screens and ducts may differ from those illustrated. Areas of Residence given are based on architectural measurements. This varies from strata area as it is a different method of measuring the Residence. Plans not to scale.



- ★ Fixed Full Height Glazing Panel
- + Fixed Full Height Architectural Perforated Screen
- ▲ Fixed Full Height Architectural Batten Screens

