

# D1

# WEST VILLAGE

## Details

Bedrooms	3
Bathrooms	2
Car Bays	2

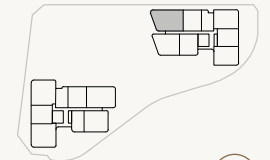
## Areas

Total	234m <sup>2</sup>
Internal Living	143m <sup>2</sup>
Outdoor Living	61m <sup>2</sup>
Car	26m <sup>2</sup>
Store	4m <sup>2</sup>
Residents' Resort	2,750m <sup>2</sup>

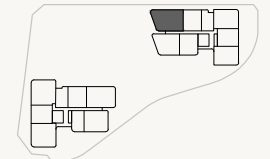
## Location

Residence	311
Similar	411, 511, 611, 711 811, 911, 1011, 1111, 1211

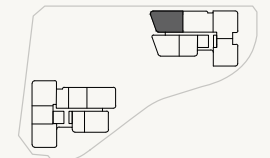
Variations from Strata Plan and Architectural Layout Plan may apply. Furniture is indicative. Shape and configuration of terraces, doors, windows, screens and ducts may differ from those illustrated. Areas of Residence given are based on architectural measurements. This varies from strata area as it is a different method of measuring the Residence. Plans not to scale.



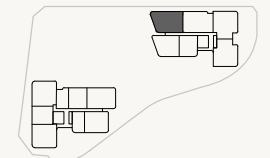
LEVEL 01



LEVEL 02



LEVEL 03 - 06



LEVEL 03 - 06

- ★ Fixed Full Height Glazing Panel
- + Fixed Full Height Architectural Perforated Screen
- ▲ Fixed Full Height Architectural Batten Screens



# D1

ALTERNATE

# WEST VILLAGE

## Details

Bedrooms	3
Bathrooms	2
Car Bays	2

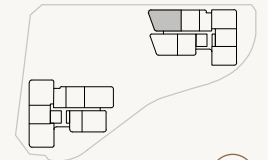
## Areas

Total	236m <sup>2</sup>
Internal Living	144m <sup>2</sup>
Outdoor Living	62m <sup>2</sup>
Car	26m <sup>2</sup>
Store	4m <sup>2</sup>
Residents' Resort	2,750m <sup>2</sup>

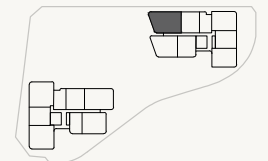
## Location

Residence	311
Similar	411, 511, 611, 711 811, 911, 1011, 1111, 1211

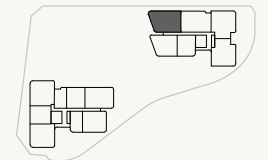
Variations from Strata Plan and Architectural Layout Plan may apply. Furniture is indicative. Shape and configuration of terraces, doors, windows, screens and ducts may differ from those illustrated. Areas of Residence given are based on architectural measurements. This varies from strata area as it is a different method of measuring the Residence. Plans not to scale.



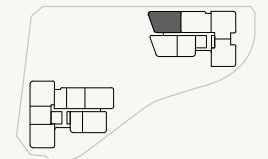
LEVEL 01



LEVEL 02



LEVEL 03 - 06



LEVEL 03 - 06

- ★ Fixed Full Height Glazing Panel
- + Fixed Full Height Architectural Perforated Screen
- ▲ Fixed Full Height Architectural Batten Screens



# WEST VILLAGE

## D2

### Details

Bedrooms	3
Bathrooms	2
Car Bays	2

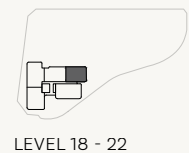
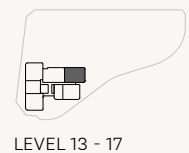
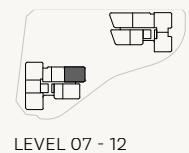
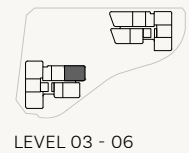
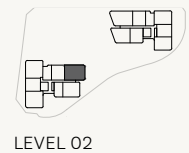
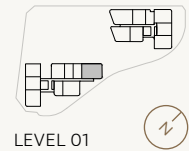
### Areas

Total	222m <sup>2</sup>
Internal Living	146m <sup>2</sup>
Outdoor Living	46m <sup>2</sup>
Car	26m <sup>2</sup>
Store	4m <sup>2</sup>
Residents' Resort	2,750m <sup>2</sup>

### Location

Residence	206
Similar	306, 406, 506, 606, 706, 806 906, 1006, 1106, 1206, 1305 1405, 1505, 1605, 1705, 1804 1904, 2004, 2104, 2204

Variations from Strata Plan and Architectural Layout Plan may apply. Furniture is indicative. Shape and configuration of terraces, doors, windows, screens and ducts may differ from those illustrated. Areas of Residence given are based on architectural measurements. This varies from strata area as it is a different method of measuring the Residence. Plans not to scale.



# WEST VILLAGE

## D2

ALTERNATE

### Details

Bedrooms	3
Bathrooms	2
Car Bays	2

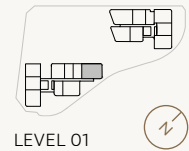
### Areas

Total	227m <sup>2</sup>
Internal Living	147m <sup>2</sup>
Outdoor Living	50m <sup>2</sup>
Car	26m <sup>2</sup>
Store	4m <sup>2</sup>
Residents' Resort	2,750m <sup>2</sup>

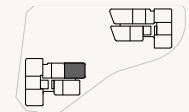
### Location

Residence	206
Similar	306, 406, 506, 606, 706, 806 906, 1006, 1106, 1206, 1305 1405, 1505, 1605, 1705, 1804 1904, 2004, 2104, 2204

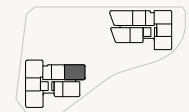
Variations from Strata Plan and Architectural Layout Plan may apply. Furniture is indicative. Shape and configuration of terraces, doors, windows, screens and ducts may differ from those illustrated. Areas of Residence given are based on architectural measurements. This varies from strata area as it is a different method of measuring the Residence. Plans not to scale.



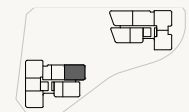
LEVEL 01



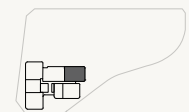
LEVEL 02



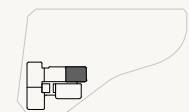
LEVEL 03 - 06



LEVEL 07 - 12

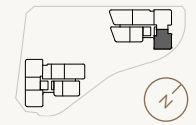


LEVEL 13 - 17



LEVEL 18 - 22

# WEST VILLAGE



LEVEL 07 - 12

## D5



### Details

Bedrooms	3
Bathrooms	2.5
Car Bays	2

### Areas

Total	240m <sup>2</sup>
Internal Living	163m <sup>2</sup>
Outdoor Living	47m <sup>2</sup>
Car	26m <sup>2</sup>
Store	4m <sup>2</sup>
Residents' Resort	2,750m <sup>2</sup>

### Location

Residence	714
Similar	814, 914, 1014, 1114, 1214

Variations from Strata Plan and Architectural Layout Plan may apply. Furniture is indicative. Shape and configuration of terraces, doors, windows, screens and ducts may differ from those illustrated. Areas of Residence given are based on architectural measurements. This varies from strata area as it is a different method of measuring the Residence. Plans not to scale.



\* Full Height Frosted Glazing to Bathroom Window

# D6

## Details

Bedrooms	3
Bathrooms	2.5
Car Bays	2

## Areas

Total	239m <sup>2</sup>
Internal Living	162m <sup>2</sup>
Outdoor Living	47m <sup>2</sup>
Car	26m <sup>2</sup>
Store	4m <sup>2</sup>
Residents' Resort	2,750m <sup>2</sup>

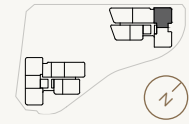
## Location

Residence	713
Similar	813, 913, 1013, 1113, 1213

Variations from Strata Plan and Architectural Layout Plan may apply. Furniture is indicative. Shape and configuration of terraces, doors, windows, screens and ducts may differ from those illustrated. Areas of Residence given are based on architectural measurements. This varies from strata area as it is a different method of measuring the Residence. Plans not to scale.



# WEST VILLAGE



LEVEL 07 - 12

\* Full Height Architectural Facade Corner Feature Element on certain levels. Refer to Contract Plans