

C1b

WEST VILLAGE

Details

Bedrooms	2
Bathrooms	2
Car Bays	2

Areas

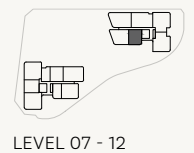
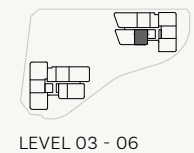
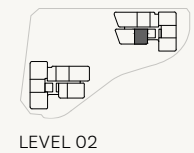
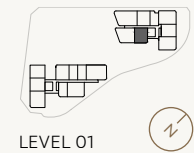
Total	160m ²
Internal Living	99m ²
Outdoor Living	31m ²
Car	26m ²
Store	4m ²
Residents' Resort	2,750m ²

Location

Residence	110*
Similar	209*, 309*, 409, 509, 609, 709 809, 909, 1009, 1109, 1209

* 1 Car Bay

Variations from Strata Plan and Architectural Layout Plan may apply. Furniture is indicative. Shape and configuration of terraces, doors, windows, screens and ducts may differ from those illustrated. Areas of Residence given are based on architectural measurements. This varies from strata area as it is a different method of measuring the Residence. Plans not to scale.



D1

WEST VILLAGE

Details

Bedrooms	3
Bathrooms	2
Car Bays	2

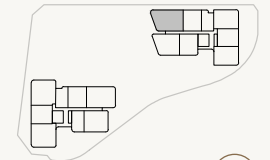
Areas

Total	234m ²
Internal Living	143m ²
Outdoor Living	61m ²
Car	26m ²
Store	4m ²
Residents' Resort	2,750m ²

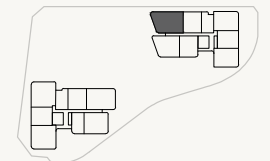
Location

Residence	311
Similar	411, 511, 611, 711 811, 911, 1011, 1111, 1211

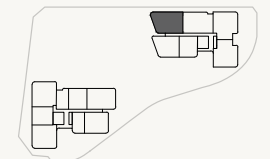
Variations from Strata Plan and Architectural Layout Plan may apply. Furniture is indicative. Shape and configuration of terraces, doors, windows, screens and ducts may differ from those illustrated. Areas of Residence given are based on architectural measurements. This varies from strata area as it is a different method of measuring the Residence. Plans not to scale.



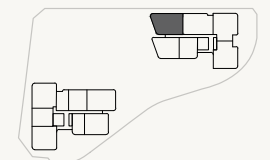
LEVEL 01



LEVEL 02



LEVEL 03 - 06



LEVEL 03 - 06

- ★ Fixed Full Height Glazing Panel
- + Fixed Full Height Architectural Perforated Screen
- ▲ Fixed Full Height Architectural Batten Screens



D1

ALTERNATE

WEST VILLAGE

Details

Bedrooms	3
Bathrooms	2
Car Bays	2

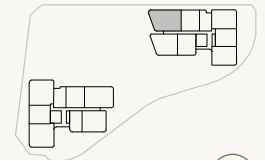
Areas

Total	236m ²
Internal Living	144m ²
Outdoor Living	62m ²
Car	26m ²
Store	4m ²
Residents' Resort	2,750m ²

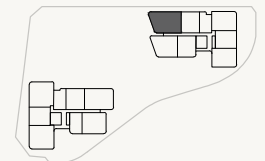
Location

Residence	311
Similar	411, 511, 611, 711 811, 911, 1011, 1111, 1211

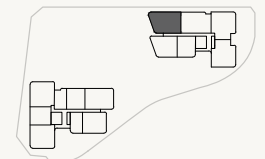
Variations from Strata Plan and Architectural Layout Plan may apply. Furniture is indicative. Shape and configuration of terraces, doors, windows, screens and ducts may differ from those illustrated. Areas of Residence given are based on architectural measurements. This varies from strata area as it is a different method of measuring the Residence. Plans not to scale.



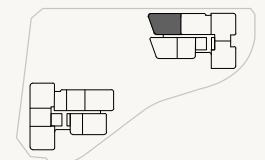
LEVEL 01



LEVEL 02



LEVEL 03 - 06



LEVEL 03 - 06

- ★ Fixed Full Height Glazing Panel
- + Fixed Full Height Architectural Perforated Screen
- ▲ Fixed Full Height Architectural Batten Screens



WEST VILLAGE

D2

Details

Bedrooms	3
Bathrooms	2
Car Bays	2

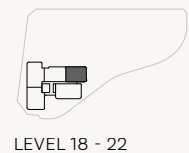
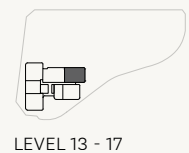
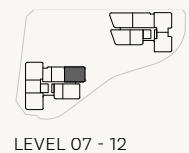
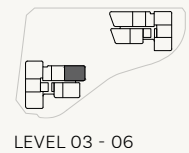
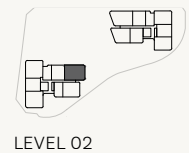
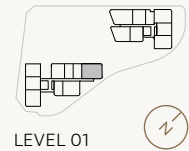
Areas

Total	222m ²
Internal Living	146m ²
Outdoor Living	46m ²
Car	26m ²
Store	4m ²
Residents' Resort	2,750m ²

Location

Residence	206
Similar	306, 406, 506, 606, 706, 806 906, 1006, 1106, 1206, 1305 1405, 1505, 1605, 1705, 1804 1904, 2004, 2104, 2204

Variations from Strata Plan and Architectural Layout Plan may apply. Furniture is indicative. Shape and configuration of terraces, doors, windows, screens and ducts may differ from those illustrated. Areas of Residence given are based on architectural measurements. This varies from strata area as it is a different method of measuring the Residence. Plans not to scale.



WEST VILLAGE

D2

ALTERNATE

Details

Bedrooms	3
Bathrooms	2
Car Bays	2

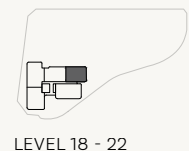
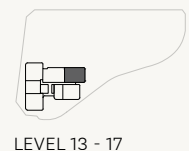
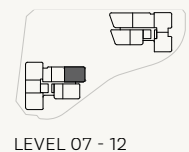
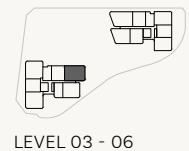
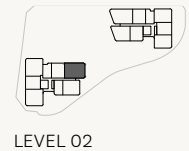
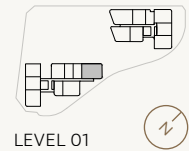
Areas

Total	227m ²
Internal Living	147m ²
Outdoor Living	50m ²
Car	26m ²
Store	4m ²
Residents' Resort	2,750m ²

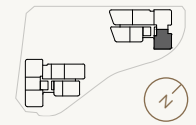
Location

Residence	206
Similar	306, 406, 506, 606, 706, 806 906, 1006, 1106, 1206, 1305 1405, 1505, 1605, 1705, 1804 1904, 2004, 2104, 2204

Variations from Strata Plan and Architectural Layout Plan may apply. Furniture is indicative. Shape and configuration of terraces, doors, windows, screens and ducts may differ from those illustrated. Areas of Residence given are based on architectural measurements. This varies from strata area as it is a different method of measuring the Residence. Plans not to scale.



WEST VILLAGE



LEVEL 07 - 12

D5

Details

Bedrooms	3
Bathrooms	2.5
Car Bays	2

Areas

Total	240m ²
Internal Living	163m ²
Outdoor Living	47m ²
Car	26m ²
Store	4m ²
Residents' Resort	2,750m ²

Location

Residence	714
Similar	814, 914, 1014, 1114, 1214

Variations from Strata Plan and Architectural Layout Plan may apply. Furniture is indicative. Shape and configuration of terraces, doors, windows, screens and ducts may differ from those illustrated. Areas of Residence given are based on architectural measurements. This varies from strata area as it is a different method of measuring the Residence. Plans not to scale.



* Full Height Frosted Glazing to Bathroom Window

D6

Details

Bedrooms	3
Bathrooms	2.5
Car Bays	2

Areas

Total	239m ²
Internal Living	162m ²
Outdoor Living	47m ²
Car	26m ²
Store	4m ²
Residents' Resort	2,750m ²

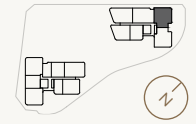
Location

Residence	713
Similar	813, 913, 1013, 1113, 1213

Variations from Strata Plan and Architectural Layout Plan may apply. Furniture is indicative. Shape and configuration of terraces, doors, windows, screens and ducts may differ from those illustrated. Areas of Residence given are based on architectural measurements. This varies from strata area as it is a different method of measuring the Residence. Plans not to scale.



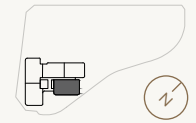
WEST VILLAGE



LEVEL 07 - 12

* Full Height Architectural Facade Corner Feature Element on certain levels. Refer to Contract Plans

WEST VILLAGE



LEVEL 18 - 22

D7



Details

Bedrooms	3
Bathrooms	2
Car Bays	2

Areas

Total	279m ²
Internal Living	179m ²
Outdoor Living	70m ²
Car	26m ²
Store	4m ²
Residents' Resort	2,750m ²

Location

Residence	1805
Similar	1905, 2005, 2105, 2205

Variations from Strata Plan and Architectural Layout Plan may apply. Furniture is indicative. Shape and configuration of terraces, doors, windows, screens and ducts may differ from those illustrated. Areas of Residence given are based on architectural measurements. This varies from strata area as it is a different method of measuring the Residence. Plans not to scale.



WEST VILLAGE

D8

Details

Bedrooms	3
Bathrooms	2
Car Bays	2.5

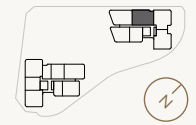
Areas

Total	239m ²
Internal Living	180m ²
Outdoor Living	29m ²
Car	26m ²
Store	4m ²
Residents' Resort	2,750m ²

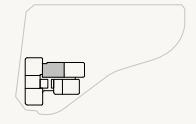
Location

Residence	1304, 1404, 1504, 1604, 1704
Similar	712, 812, 912, 1012, 1112, 1212 1803, 1903, 2003, 2103, 2203

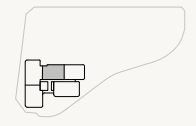
Variations from Strata Plan and Architectural Layout Plan may apply. Furniture is indicative. Shape and configuration of terraces, doors, windows, screens and ducts may differ from those illustrated. Areas of Residence given are based on architectural measurements. This varies from strata area as it is a different method of measuring the Residence. Plans not to scale.



LEVEL 07 - 12



LEVEL 13 - 17



LEVEL 18 - 22

D8a

WEST VILLAGE

Details

Bedrooms	3
Bathrooms	2.5
Car Bays	2

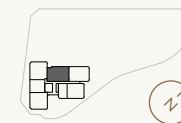
Areas

Total	234m ²
Internal Living	180m ²
Outdoor Living	33m ²
Car	26m ²
Store	4m ²
Residents' Resort	2,750m ²

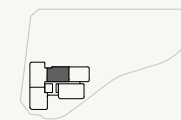
Location

Residence	1304
Similar	1404, 1504, 1604, 1704 1803, 1903, 2003, 2103, 2203

Variations from Strata Plan and Architectural Layout Plan may apply. Furniture is indicative. Shape and configuration of terraces, doors, windows, screens and ducts may differ from those illustrated. Areas of Residence given are based on architectural measurements. This varies from strata area as it is a different method of measuring the Residence. Plans not to scale.



LEVEL 13 - 17

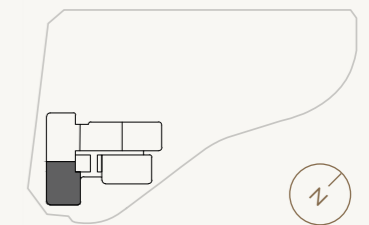


LEVEL 18 - 22



P1

WEST VILLAGE



LEVELS 18 - 22

Details

Bedrooms	3 - 4
Bathrooms	2
Car Bays	2 - 3

Areas

Total	279m ²
Internal Living	203m ²
Outdoor Living	46m ²
Car	26m ²
Store	4m ²
Residents' Resort	2,750m ²

Location

Residence	1801
Similar	1901, 2001, 2101, 2201*

* 3 Car Bays

Variations from Strata Plan and Architectural Layout Plan may apply. Furniture is indicative. Shape and configuration of terraces, doors, windows, screens and ducts may differ from those illustrated. Areas of Residence given are based on architectural measurements. This varies from strata area as it is a different method of measuring the Residence. Plans not to scale.



- * Fixed Full Height Glazing Panel
- + Fixed Full Height Architectural Louvres & Perforated Screen

P2

Details

Bedrooms	3 - 4
Bathrooms	2.5
Car Bays	2 - 3

Areas

Total	317m ²
Internal Living	229m ²
Outdoor Living	58m ²
Car	26m ²
Store	4m ²
Residents' Resort	2,750m ²

Location

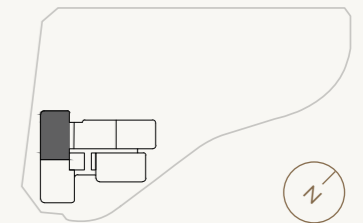
Residence	1802
Similar	1902, 2002, 2102, 2202*

* 3 Car Bays

Variations from Strata Plan and Architectural Layout Plan may apply. Furniture is indicative. Shape and configuration of terraces, doors, windows, screens and ducts may differ from those illustrated. Areas of Residence given are based on architectural measurements. This varies from strata area as it is a different method of measuring the Residence. Plans not to scale.



WEST VILLAGE



LEVELS 18 - 22

- * Fixed Full Height Glazing Panel
- + Fixed Full Height Architectural Louvres & Perforated Screen