

# D1

# WEST VILLAGE

## Details

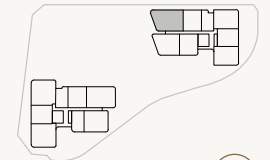
Bedrooms	3
Bathrooms	2
Car Bays	2

## Areas

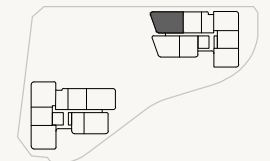
Total	234m <sup>2</sup>
Internal Living	143m <sup>2</sup>
Outdoor Living	61m <sup>2</sup>
Car	26m <sup>2</sup>
Store	4m <sup>2</sup>
Residents' Resort	2,750m <sup>2</sup>

## Location

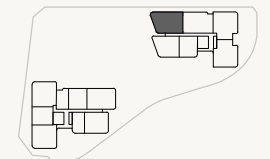
Residence	311
Similar	411, 561, 1211



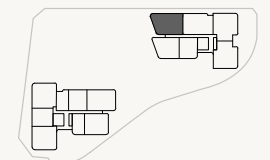
LEVEL 01



LEVEL 02



LEVEL 03 - 06



LEVEL 03 - 06

- ★ Fixed Full Height Glazing Panel
- + Fixed Full Height Architectural Perforated Screen
- ▲ Fixed Full Height Architectural Batten Screens

Variations from Strata Plan and Architectural Layout Plan may apply. Furniture is indicative. Shape and configuration of terraces, doors, windows, screens and ducts may differ from those illustrated. Areas of Residence given are based on architectural measurements. This varies from strata area as it is a different method of measuring the Residence. Plans not to scale.



# D1a

# WEST VILLAGE

## Details

Bedrooms	3
Bathrooms	2
Car Bays	2

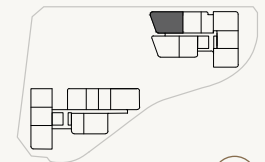
## Areas

Total	246m <sup>2</sup>
Internal Living	143m <sup>2</sup>
Outdoor Living	73m <sup>2</sup>
Car	26m <sup>2</sup>
Store	4m <sup>2</sup>
Residents' Resort	2,750m <sup>2</sup>

## Location

Residence	112
-----------	-----

Variations from Strata Plan and Architectural Layout Plan may apply. Furniture is indicative. Shape and configuration of terraces, doors, windows, screens and ducts may differ from those illustrated. Areas of Residence given are based on architectural measurements. This varies from strata area as it is a different method of measuring the Residence. Plans not to scale.



LEVEL 01



- ★ Fixed Full Height Glazing Panel
- + Fixed Full Height Architectural Perforated Screen
- ▲ Fixed Full Height Architectural Batten Screens

# D1b

# WEST VILLAGE

## Details

Bedrooms	3
Bathrooms	2
Car Bays	2

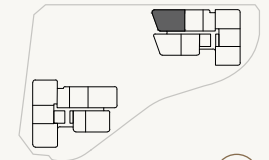
## Areas

Total	250m <sup>2</sup>
Internal Living	143m <sup>2</sup>
Outdoor Living	77m <sup>2</sup>
Car	26m <sup>2</sup>
Store	4m <sup>2</sup>
Residents' Resort	2,750m <sup>2</sup>

## Location

Residence	211
-----------	-----

Variations from Strata Plan and Architectural Layout Plan may apply. Furniture is indicative. Shape and configuration of terraces, doors, windows, screens and ducts may differ from those illustrated. Areas of Residence given are based on architectural measurements. This varies from strata area as it is a different method of measuring the Residence. Plans not to scale.



LEVEL 02



- ★ Fixed Full Height Glazing Panel
- + Fixed Full Height Architectural Perforated Screen
- ▲ Fixed Full Height Architectural Batten Screens

# WEST VILLAGE

## D2

### Details

Bedrooms	3
Bathrooms	2
Car Bays	2

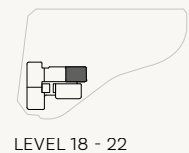
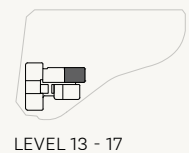
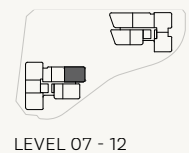
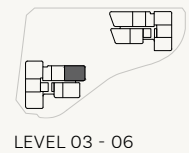
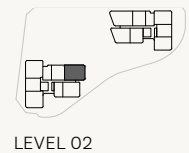
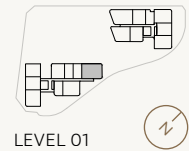
### Areas

Total	222m <sup>2</sup>
Internal Living	146m <sup>2</sup>
Outdoor Living	46m <sup>2</sup>
Car	26m <sup>2</sup>
Store	4m <sup>2</sup>
Residents' Resort	2,750m <sup>2</sup>

### Location

Residence	206
Similar	304, 406, 506, 606, 706, 806, 906, 1006, 1106, 1206, 1305, 1405, 1505, 1605, 1705, 1804, 1904, 2004, 2104, 2204

Variations from Strata Plan and Architectural Layout Plan may apply. Furniture is indicative. Shape and configuration of terraces, doors, windows, screens and ducts may differ from those illustrated. Areas of Residence given are based on architectural measurements. This varies from strata area as it is a different method of measuring the Residence. Plans not to scale.



# WEST VILLAGE

## D3













### Details

Bedrooms	3
Bathrooms	2
Car Bays	2

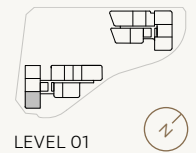
### Areas

Total	220m <sup>2</sup>
Internal Living	147m <sup>2</sup>
Outdoor Living	43m <sup>2</sup>
Car	26m <sup>2</sup>
Store	4m <sup>2</sup>
Residents' Resort	2,750m <sup>2</sup>

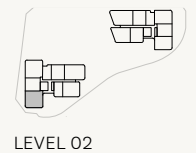
### Location

Residence	
Similar	401, 501,  
	801,    1101, 1201,
	      1701

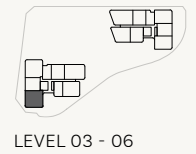
Variations from Strata Plan and Architectural Layout Plan may apply. Furniture is indicative. Shape and configuration of terraces, doors, windows, screens and ducts may differ from those illustrated. Areas of Residence given are based on architectural measurements. This varies from strata area as it is a different method of measuring the Residence. Plans not to scale.



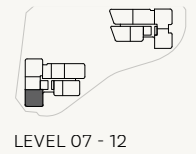
LEVEL 01



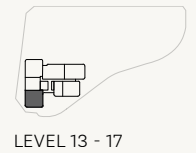
LEVEL 02



LEVEL 03 - 06



LEVEL 07 - 12



LEVEL 13 - 17

- ★ Fixed Full Height Glazing Panel
- + Fixed Full Height Architectural Perforated Screen
- ▲ Full Height Frosted Glazing to Bathroom Window



# D3a


## Details

Bedrooms	3
Bathrooms	2
Car Bays	2

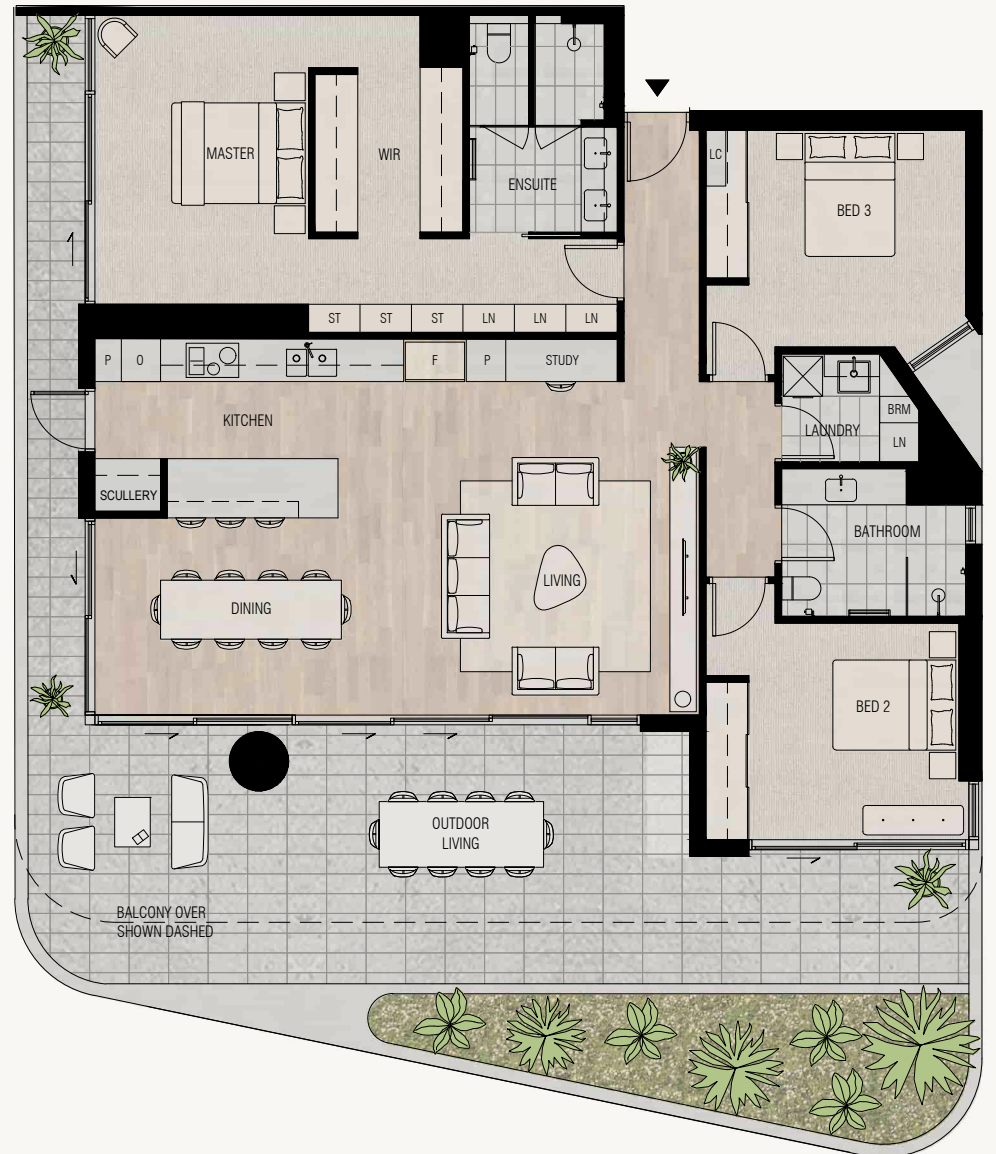
## Areas

Total	256m <sup>2</sup>
Internal Living	147m <sup>2</sup>
Outdoor Living	79m <sup>2</sup>
Car	26m <sup>2</sup>
Store	4m <sup>2</sup>
Residents' Resort	2,750m <sup>2</sup>

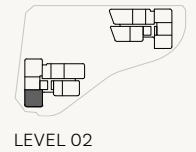
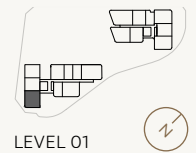
## Location

Residence	
Similar	201

Variations from Strata Plan and Architectural Layout Plan may apply. Furniture is indicative. Shape and configuration of terraces, doors, windows, screens and ducts may differ from those illustrated. Areas of Residence given are based on architectural measurements. This varies from strata area as it is a different method of measuring the Residence. Plans not to scale.



# WEST VILLAGE



▲ Full Height Frosted Glazing to Bathroom Window

# D4

## Details

Bedrooms	3
Bathrooms	2
Car Bays	2

## Areas

Total	233m <sup>2</sup>
Internal Living	156m <sup>2</sup>
Outdoor Living	47m <sup>2</sup>
Car	26m <sup>2</sup>
Store	4m <sup>2</sup>
Residents' Resort	2,750m <sup>2</sup>

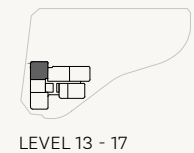
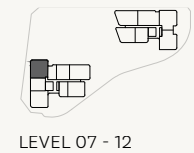
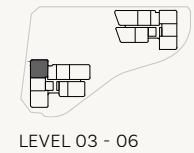
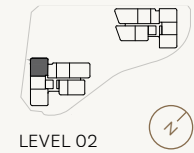
## Location

Residence	203
Similar	303, 403, 503, 603, 703, 803, 903, 1003, 1103, 1203, 1303, 1403, 1503, 1603, 1703

Variations from Strata Plan and Architectural Layout Plan may apply. Furniture is indicative. Shape and configuration of terraces, doors, windows, screens and ducts may differ from those illustrated. Areas of Residence given are based on architectural measurements. This varies from strata area as it is a different method of measuring the Residence. Plans not to scale.

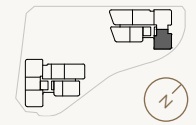


# WEST VILLAGE



- ★ Fixed Full Height Glazing Panel
- + Fixed Full Height Architectural Perforated Screen
- ▲ Fixed Full Height Architectural Batten Screens

# WEST VILLAGE



LEVEL 07 - 12

## D5

### Details

Bedrooms	3
Bathrooms	2.5
Car Bays	2

### Areas

Total	240m <sup>2</sup>
Internal Living	163m <sup>2</sup>
Outdoor Living	47m <sup>2</sup>
Car	26m <sup>2</sup>
Store	4m <sup>2</sup>
Residents' Resort	2,750m <sup>2</sup>

### Location

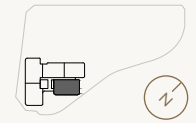
Residence	
Similar	814, 914, 1014, 1114, 1214

Variations from Strata Plan and Architectural Layout Plan may apply. Furniture is indicative. Shape and configuration of terraces, doors, windows, screens and ducts may differ from those illustrated. Areas of Residence given are based on architectural measurements. This varies from strata area as it is a different method of measuring the Residence. Plans not to scale.



\* Full Height Frosted Glazing to Bathroom Window

# WEST VILLAGE



LEVEL 18 - 22

# D7

## Details

Bedrooms	3
Bathrooms	2
Car Bays	2

## Areas

Total	279m <sup>2</sup>
Internal Living	179m <sup>2</sup>
Outdoor Living	70m <sup>2</sup>
Car	26m <sup>2</sup>
Store	4m <sup>2</sup>
Residents' Resort	2,750m <sup>2</sup>

## Location

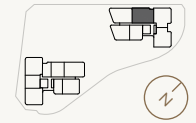
Residence	105
Similar	105, 2005, 2005, 2205



Variations from Strata Plan and Architectural Layout Plan may apply. Furniture is indicative. Shape and configuration of terraces, doors, windows, screens and ducts may differ from those illustrated. Areas of Residence given are based on architectural measurements. This varies from strata area as it is a different method of measuring the Residence. Plans not to scale.



# WEST VILLAGE



LEVEL 07 - 12

## D8

### Details

Bedrooms	3
Bathrooms	2.5
Car Bays	2

### Areas

Total	239m <sup>2</sup>
Internal Living	180m <sup>2</sup>
Outdoor Living	29m <sup>2</sup>
Car	26m <sup>2</sup>
Store	4m <sup>2</sup>
Residents' Resort	2,750m <sup>2</sup>

### Location

Residence 712, 912, 112, 12, 1



Variations from Strata Plan and Architectural Layout Plan may apply. Furniture is indicative. Shape and configuration of terraces, doors, windows, screens and ducts may differ from those illustrated. Areas of Residence given are based on architectural measurements. This varies from strata area as it is a different method of measuring the Residence. Plans not to scale.



# D8a

## Details

Bedrooms	3
Bathrooms	2.5
Car Bays	2

## Areas

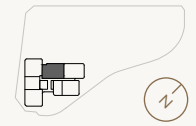
Total	234m <sup>2</sup>
Internal Living	180m <sup>2</sup>
Outdoor Living	33m <sup>2</sup>
Car	26m <sup>2</sup>
Store	4m <sup>2</sup>
Residents' Resort	2,750m <sup>2</sup>

## Location

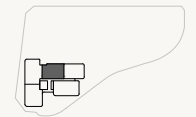
Residence	1404
Similar	1404, 1504, 1604, 1704, 1803, 1903, 2003, 2103, 2203



# WEST VILLAGE



LEVEL 13 - 17

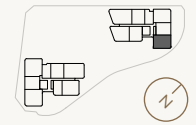


LEVEL 18 - 22

Variations from Strata Plan and Architectural Layout Plan may apply. Furniture is indicative. Shape and configuration of terraces, doors, windows, screens and ducts may differ from those illustrated. Areas of Residence given are based on architectural measurements. This varies from strata area as it is a different method of measuring the Residence. Plans not to scale.



# WEST VILLAGE



LEVEL 02 - 06

## D9

### Details

Bedrooms	3
Bathrooms	2
Car Bays	2

### Areas

Total	186m <sup>2</sup>
Internal Living	121m <sup>2</sup>
Outdoor Living	35m <sup>2</sup>
Car	26m <sup>2</sup>
Store	4m <sup>2</sup>
Residents' Resort	2,750m <sup>2</sup>

### Location

Residence	
Similar	316, 416,

Variations from Strata Plan and Architectural Layout Plan may apply. Furniture is indicative. Shape and configuration of terraces, doors, windows, screens and ducts may differ from those illustrated. Areas of Residence given are based on architectural measurements. This varies from strata area as it is a different method of measuring the Residence. Plans not to scale.



★ Full Height Architectural Facade Corner Feature Element on certain levels. Refer to Contract Plans

▲ Frosted Glazing to Bathroom Window